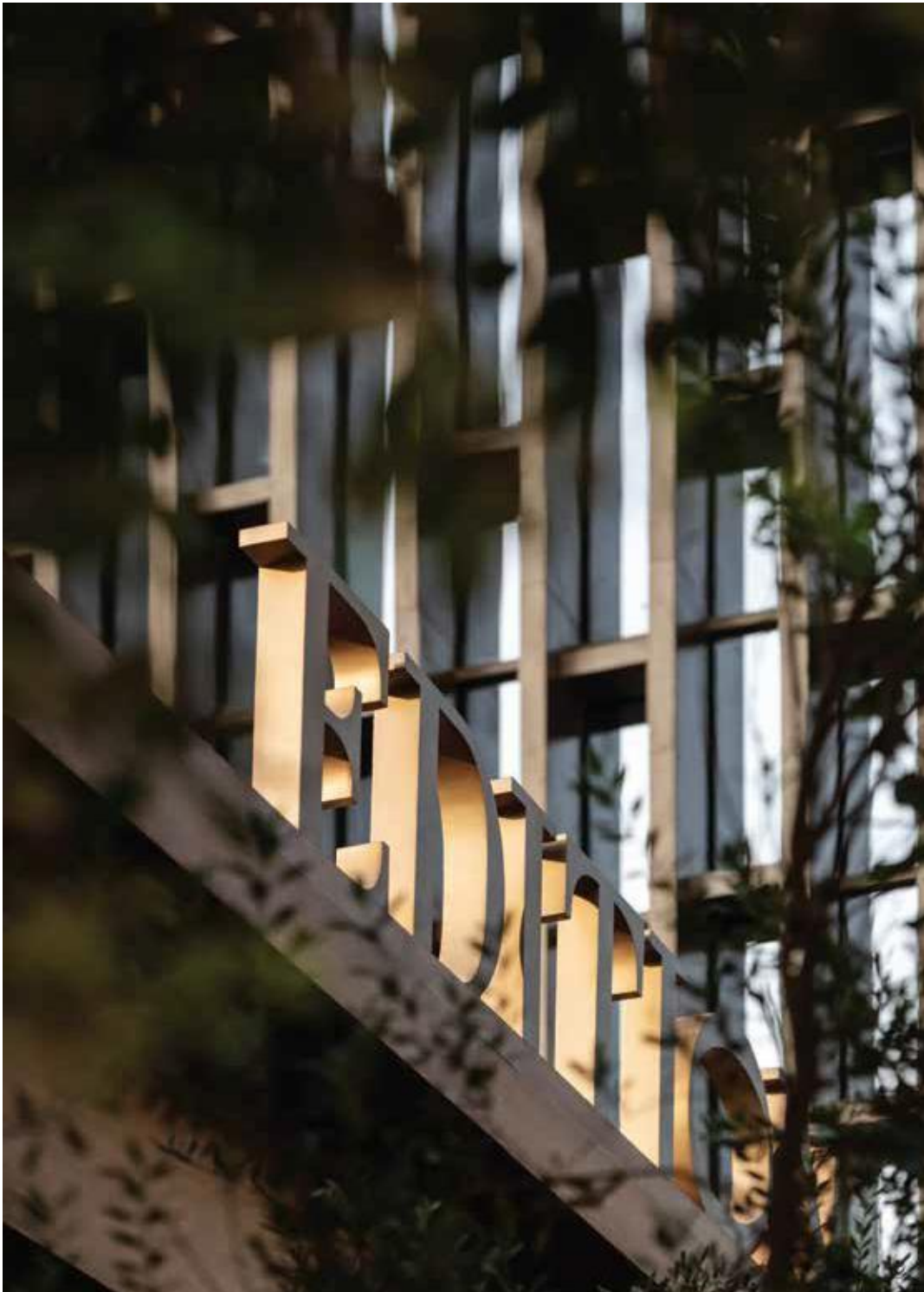




THE
DUBAI

EDITION



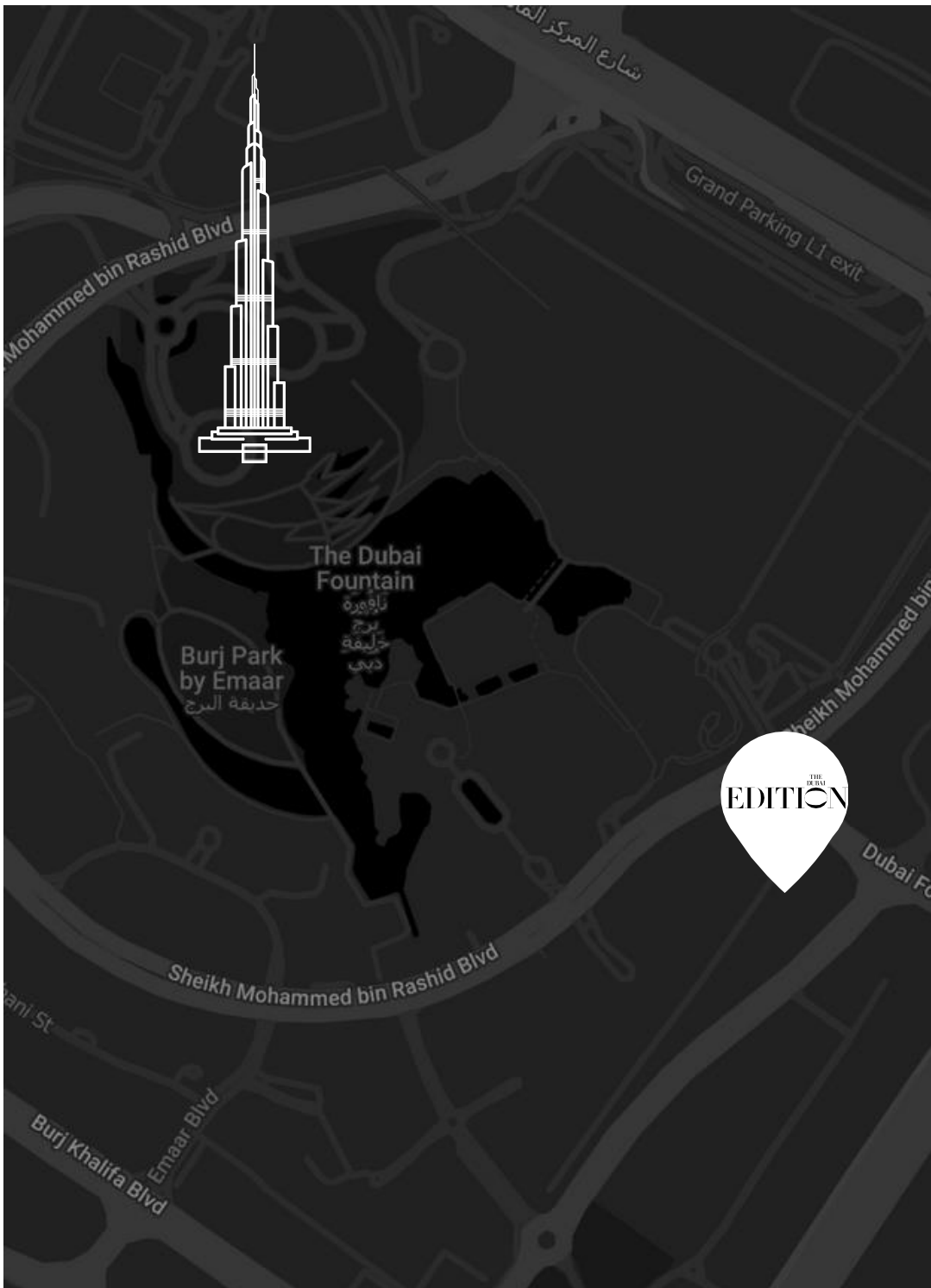
THE DUBAI EDITION

A MARRIOTT LUXURY BRAND

The Dubai EDITION is a part of Marriott International's luxury portfolio. It's committed to sophisticated design, exceptional service, and unique experiences. Located in the heart of Downtown Dubai, the hotel seamlessly blends modern elegance with the city's vibrant energy. Designed with LW Design Group, it features 275 guestrooms and suites and is opposite the renowned Dubai Mall.

KEY HIGHLIGHTS

- **Design Excellence:** Crafted by LW Design Group, the hotel features a minimalist yet luxurious aesthetic, with natural materials and warm tones creating a serene atmosphere.
- **Luxurious Accommodations:** Offering 275 elegantly designed rooms and suites, each with panoramic views of the iconic Burj Khalifa and the Dubai skyline.
- **Culinary Delights:** High-end dining options, including Duomo for Italian cuisine, Thia Skylounge for Mediterranean cuisine, Sumosan for Japanese dishes, Agora, a social bar with multiple awards, and Masti for innovative Indian flavors and a Michelin star rating.
- **World-Class Amenities:** Guests can enjoy a state-of-the-art fitness center, an infinity pool with stunning city views, and a tranquil spa offering a range of treatments.
- **Prime Location:** It is within walking distance of major attractions like the Burj Khalifa, Dubai Mall, and Dubai Opera, making it ideal for leisure and business travelers.



THE DUBAI EDITION

The Dubai EDITION is the epitome of luxury, a testament to Marriott's dedication to providing unparalleled luxury and personalized experiences. It's a standout destination in one of the world's most dynamic cities, where every guest is indulged, and every need is catered to.

Situated in Downtown Dubai, the Dubai EDITION is located in one of the city's most popular locations, opposite the world-famous Dubai Mall.

Dubai Mall - 400 m away distance

Burj Khalifa – 1.5 km away distance

Dubai Financial Centre (DFC) - 6 km away distance
Dubai International Airport (DXB) - 14 km away distance

The hotel is designed with LW Design Group LLC, and it features 275 guestrooms and suites.

DUOMO, serving up Italian favorites under immersive digital art rotating in the dome-shaped ceiling

Thia, a poolside bar and lounge with an infinity pool and front-row view to Burj Khalifa

Spa featuring three treatment rooms

State-of-the-art gym 24-hour Room Service

ROOMS & SUITES





THE DUBAI EDITION

GUEST ROOMS

90 units | 42sqm / 452sqft

ROOM TYPES

King Bed 71 units | Twin Bed 19 units

FEATURES

24-hour Room service Coffee maker / tea service Alarm Clock
Safe in room Desk, electrical outlet Iron and ironing board

BEDDING

Down comforters and pillows Custom imported linens

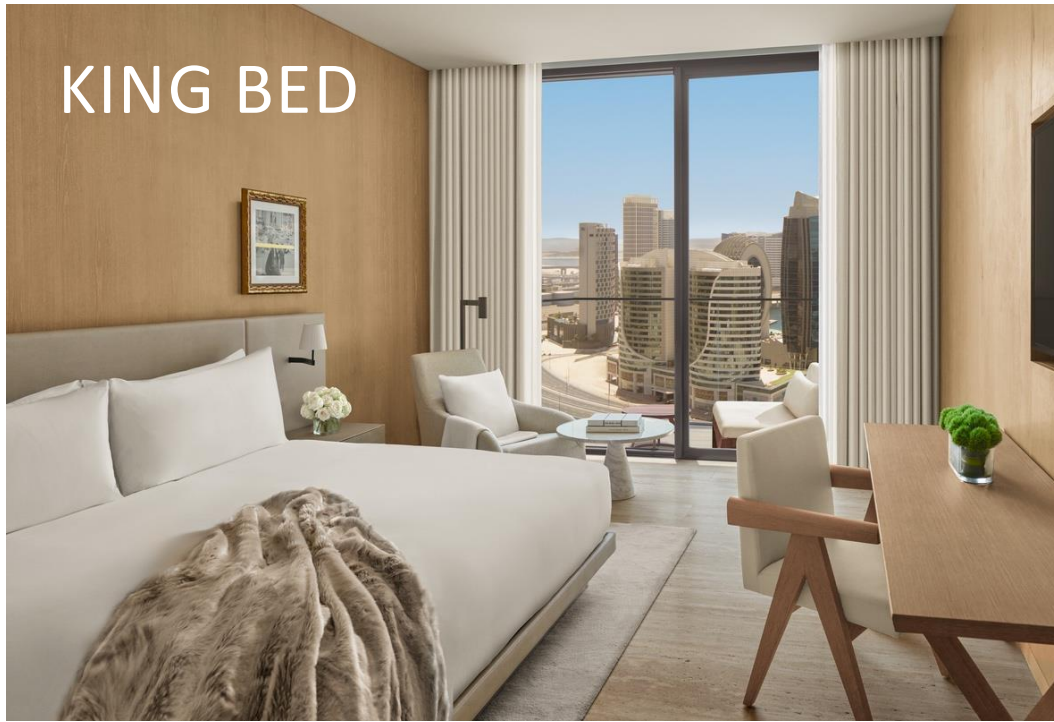
BATH

Marble bathroom Bathtub and shower separate
Bidet | Hair dryer | Robe | Slippers

TECH

Complimentary high-speed, wireless internet access
55" flat screen HDTVs with full cable access and high definition
channels Bluetooth speakers in every room

KING BED



THE
DUBAI
EDITION

GUEST ROOMS
City View with Balcony

BATHROOM



TWIN BED





THE DUBAI EDITION

SUPERIOR ROOMS

81 units | 42sqm / 452sqft

ROOM TYPES

King Bed 67 units | Twin Bed 14 units

FEATURES

24-hour Room service Coffee maker / tea service Alarm Clock
Safe in room Desk, electrical outlet Iron and ironing board

BEDDING

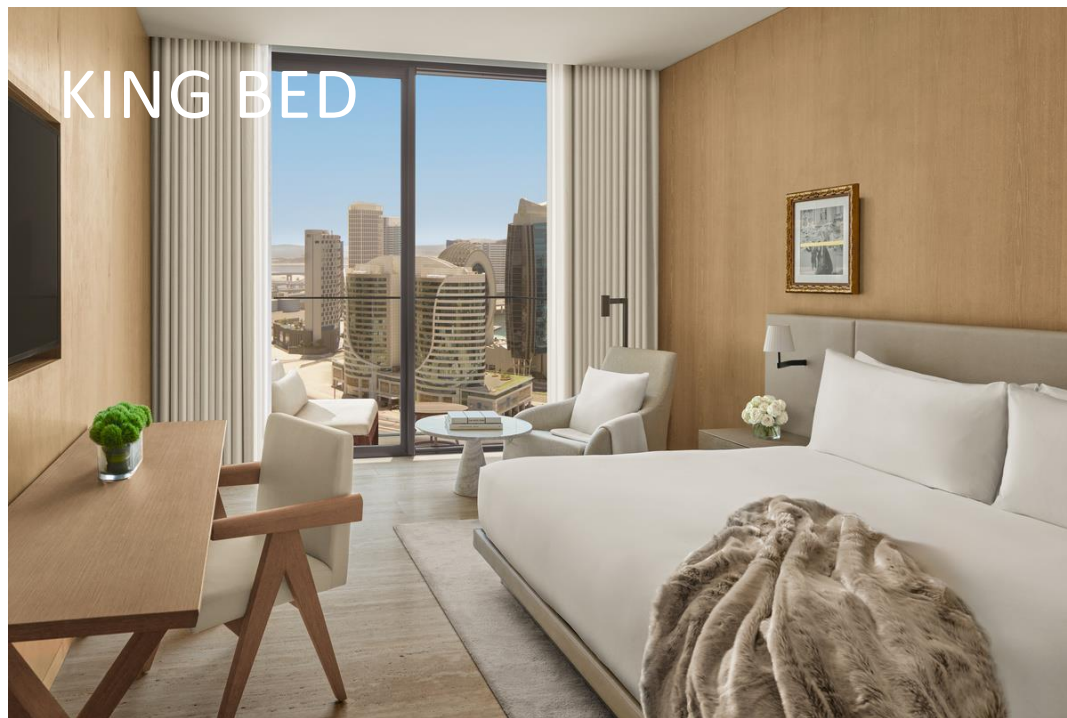
Down comforters and pillows Custom imported linens

BATH

Marble bathroom Bathtub and shower separate
Bidet | Hair dryer | Robe | Slippers

TECH

Complimentary high-speed, wireless internet access
55" flat screen HDTVs with full cable access and high definition
channels Bluetooth speakers in every room



KING BED

THE
DUBAI
EDITION

SUPERIOR ROOMS
Higher floors - City View with Balcony



BATHROOM



TWIN BED



THE DUBAI EDITION

DELUXE ROOMS

62 units | 42sqm / 452sqft

ROOM TYPES

King Bed 34 units | Twin Bed 28 units

FEATURES

24-hour Room service Coffee maker / tea service Alarm Clock
Safe in room Desk, electrical outlet Iron and ironing board

BEDDING

Down comforters and pillows Custom imported linens

BATH

Marble bathroom Bathtub and shower separate
Bidet | Hair dryer | Robe | Slippers

TECH

Complimentary high-speed, wireless internet access
55" flat screen HDTVs with full cable access and high definition
channels Bluetooth speakers in every room



KING BED

THE
DUBAI
EDITION

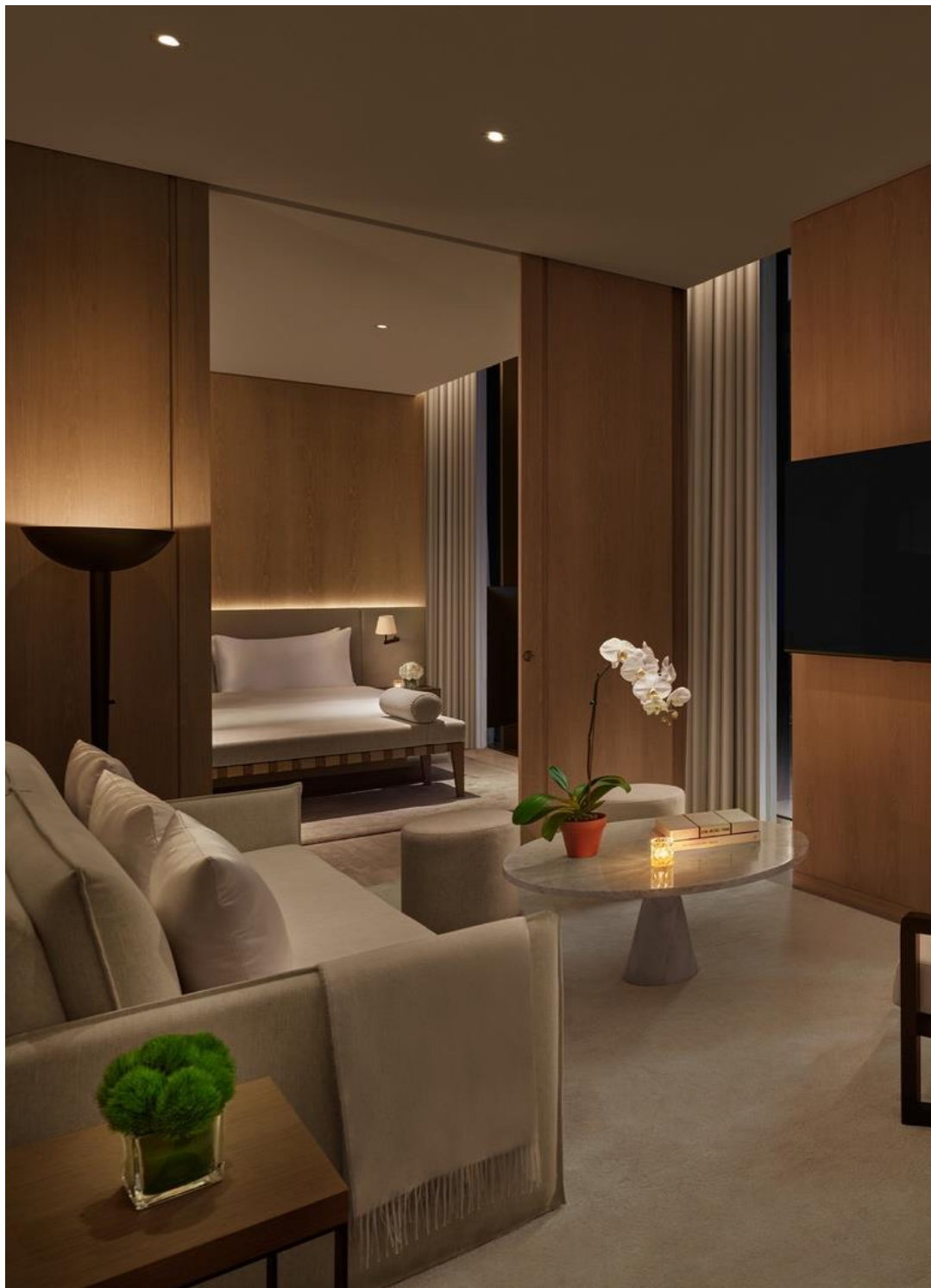
DELUXE ROOMS
Burj Khalifa & Downtown View with Balcony



BATHROOM



TWIN BED



THE DUBAI EDITION

SUPERIOR SUITE

18 units | 69sqm / 742sqft

ROOM TYPE

King bed | One bedroom suite

FEATURES

24-hour Room service Coffee maker / tea service Alarm Clock
Safe in room Desk, electrical outlet Iron and ironing board

BEDDING

Down comforters and pillows Custom imported linens

BATH

Marble Bathrooms Bathtub and shower separate
Bidet | Hair dryer | Robe | Slippers | Powder room

TECH

Complimentary high-speed, wireless internet access
65" flat screen HDTVs with full cable access and high definition
channels Bluetooth speakers in every room | Three phones with
voicemail



KING BED

THE
DUBAI
EDITION

SUPERIOR SUITE

Boulevard View with Balcony



BATHROOM



LIVING ROOM



THE DUBAI EDITION

DELUXE SUITE

19 units | 76sqm/818sqft

ROOM TYPE

King bed | One bedroom suite

FEATURES

24-hour Room service Coffee maker / tea service Alarm Clock
Safe in room Desk, electrical outlet
Iron and ironing board | Trouser press

BEDDING

Down comforters and pillows Custom imported linens

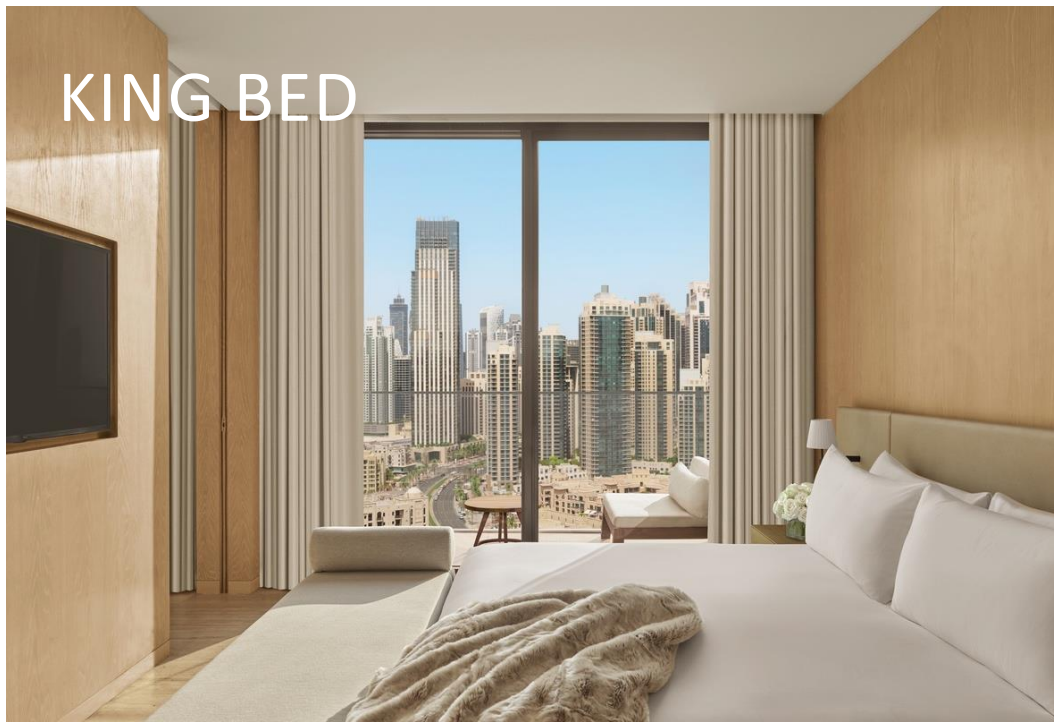
BATH

Marble Bathrooms Bathtub and shower separate
Bidet | Hair dryer | Robe | Slippers | Powder room

TECH

Complimentary high-speed, wireless internet access
65" flat screen HDTVs with full cable access and high definition
channels Bluetooth speakers in every room | Three phones with
voicemail

KING BED



THE
DUBAI
EDITION

DELUXE SUITE

Burj Khalifa & Downtown View with Balcony

BATHROOM



LIVING ROOM





THE DUBAI EDITION

PREMIERE SUITE

4 units | 115sqm / 1237sqft

ROOM TYPE

King bed | One bedroom suite

FEATURES

24-hour Room service | Coffee maker / tea service Alarm Clock | Safe in room

Desk, electrical outlet | Iron and ironing board

BEDDING

Down comforters and pillows | Custom imported linens

KITCHEN FEATURES

Fully equipped kitchen

Refrigerator | Stovetop | Oven | Microwave | Dishwasher Silverware | Pots, pans, serving dishes and glasses

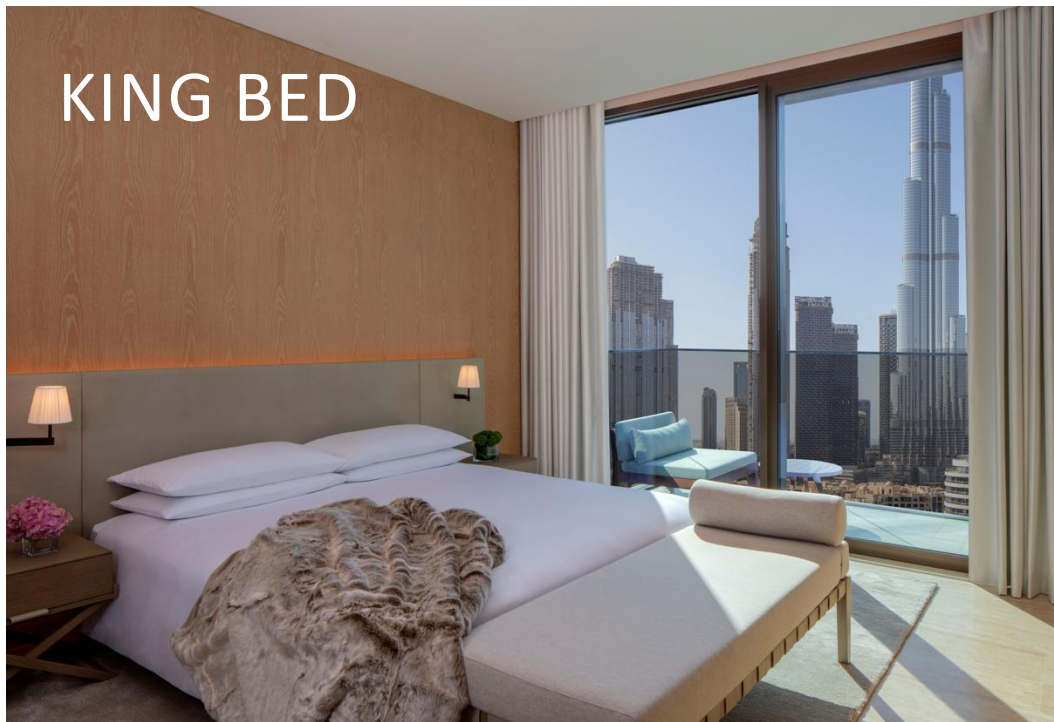
BATH

One Marble Bathrooms | Bathtub and shower separate | Bidet Hair dryer | Robe | Slippers | Powder room

TECH

Complimentary high-speed, wireless internet access
65" flat screen HDTVs with full cable access and high definition channels Bluetooth speakers in every room | Three phones with voicemail

KING BED



THE
DUBAI
EDITION

PREMIER SUITE

Burj Khalifa & Downtown View with Kitchenette &
Balcony

BATHROOM



LIVING ROOM





THE DUBAI EDITION

PENTHOUSE

1 unit | 197sqm / 2120sqft

ROOM TYPE

King bed | One bedroom suite

FEATURES

24-hour Room service | Coffee maker / tea service Alarm Clock | Safe in room

Desk, electrical outlet | Iron and ironing board

BEDDING

Down comforters and pillows | Custom imported linens

KITCHEN FEATURES

Fully equipped kitchen

Refrigerator | Stovetop | Oven | Microwave | Dishwasher Silverware | Pots, pans, serving dishes and glasses

BATH

One Marble Bathrooms | Bathtub and shower separate | Bidet Hair dryer | Robe | Slippers | Powder room

TECH

Complimentary high-speed, wireless internet access
75" flat screen HDTVs with full cable access and high definition channels Bluetooth speakers in every room | Three phones with voicemail

KING BED



THE
DUBAI
EDITION

PENTHOUSE

Panoramic Burj Khalifa, Dancing Fountains, Downtown View
with Extended Terrace & Kitchenette

BATHROOM



LIVING ROOM



RESTAURANTS & LOUNGES





DUOMO

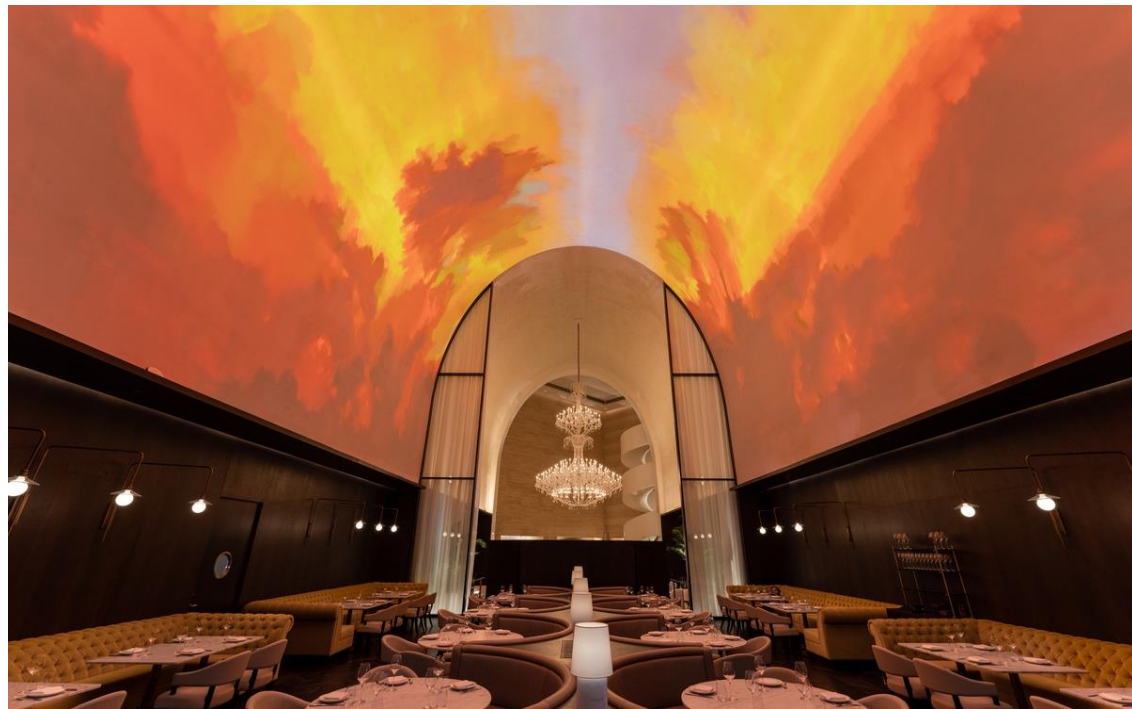
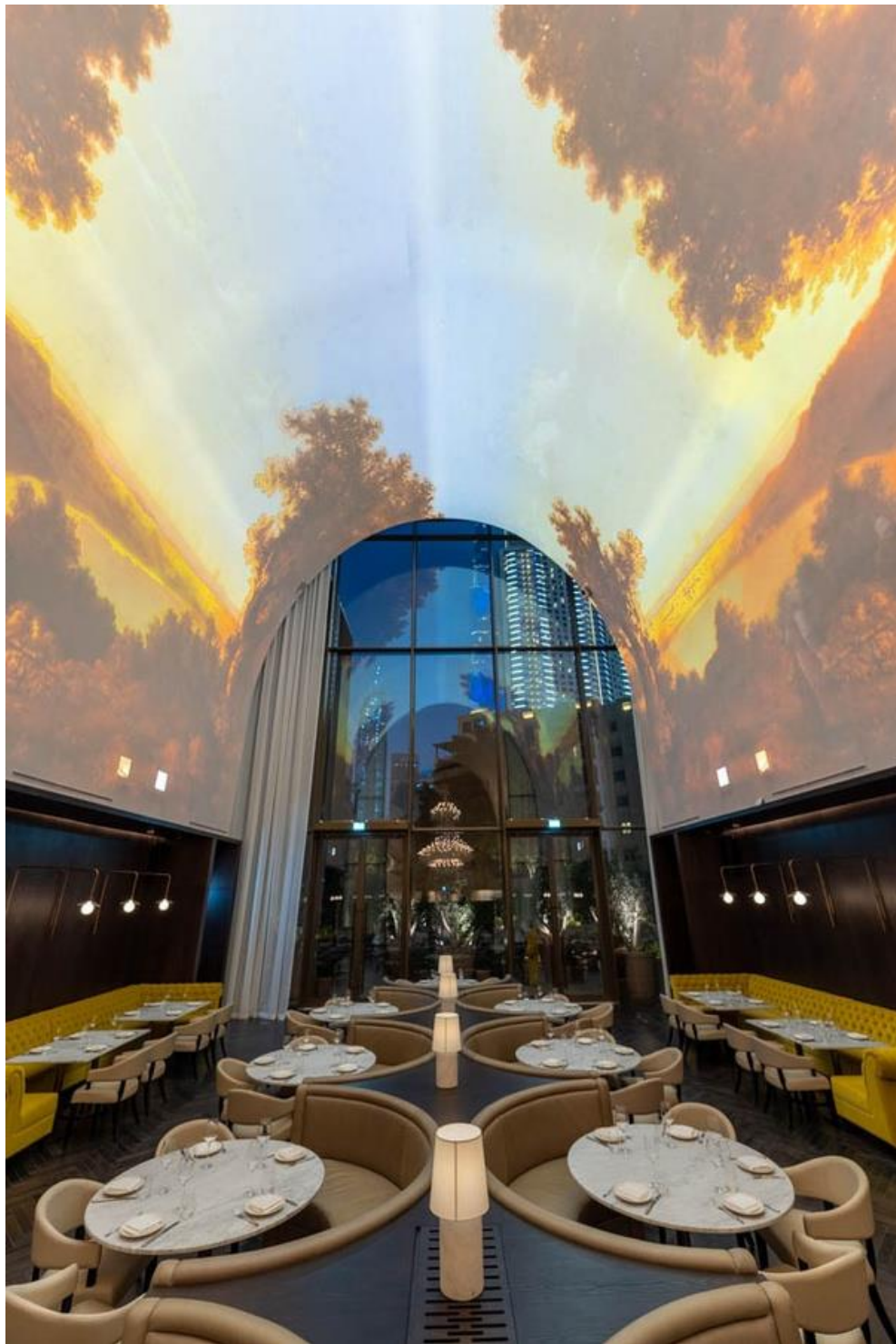
DUOMO, brings palatial luxury and timeless Italian sophistication to the heart of Dubai.

DUOMO transports visitors into a multi-sensory world of grandeur, elegance, and delight. Guests can enjoy stunning views of the Burj Khalifa or immerse themselves in an interior inspired by Milan's Piazza Del Duomo.

CUISINE
Italian

OPENING HOURS
7 am to 1 am

FOR RESERVATION
+97146023399
+971502741600





thia
SKYLounge

THIA invites you to luxuriate in Dubai's most spectacular infinity pool, where breathtaking views and sophisticated chic accompany relaxation. As night falls, the atmosphere becomes more ethereal.

Sun loungers are transformed into sofas, and ambient lighting and music enhance the essence of bliss. THIA is the meeting point of worlds, with endless skies above and a glittering city below, and it is as unforgettable as it is irresistible.

CUISINE
Mediterranean

OPENING HOURS
Daily 11 pm to 1 am

FOR RESERVATION
+97146023388
+971502741600



MEETINGS & EVENTS





THE DUBAI EDITION

EVENT SPACES

BALLROOM
227 sqm

STUDIO 1, 2 & 3
37sqm individually

Each studio can be used individually or combined, creating one space.

In addition, the same can be combined with our foyer, transforming our pre-function area into four times bigger.

PRE-FUNCTION AREA

The Dubai EDITION is well-equipped to host anything from a ballroom conference to a more intimate business gathering, with 412sqm of flexible event space. It is fully equipped with a screen and sound system elevating your experience.

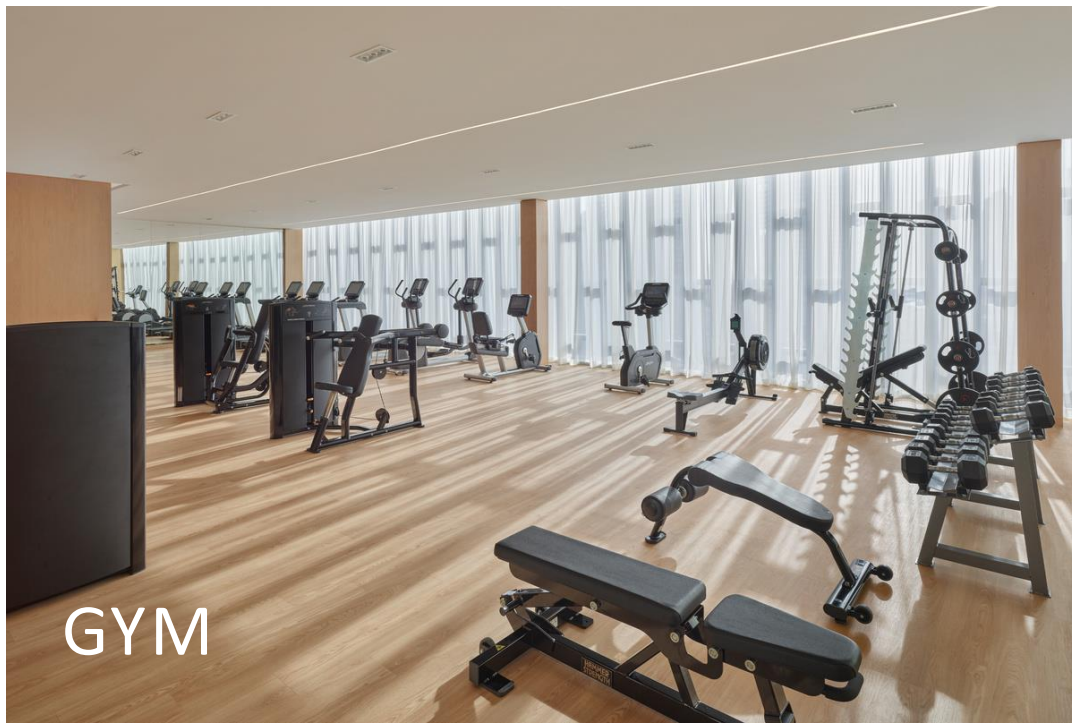


THE DUBAI EDITION

EVENT SPACE	DIMENSION METER	HEIGHT METER	SQ. METER	THEATER	CLASSROOM	CABARET	BANQUET	U-SHAPE	BOARDROOM	COCKTAIL RECEPTION
STUDIO 1	7.28 X 4.57	3.3	33.26	24	9	12	16	8	9	20
STUDIO 2	7.28 X 4.78	3.3	34.79	30	12	10	14	10	12	20
STUDIO 3	7.28 X 4.57	3.3	34.26	24	9	12	16	8	9	20
STUDIO 1 & 2	7.28 X 9.35	3.3	68.05	36	18	24	32	18	18	50
STUDIO 2 & 3	7.28 X 9.35	3.3	68.05	36	18	24	32	18	18	50
FULL STUDIO	7.28 X 13.92	3.3	102.31	60	24	36	48	26	24	70
BALLROOM	16.88 X 12.89	4	217.58	150	24	120	120	26	24	200
THIA SKY LOUNGE	-	-	443.24	-	-	-	120	-	-	200
DUOMO RESTAURANT	-	-	181	-	-	-	86	-	-	120
DUOMO TERRACE	-	-	150	-	-	-	50	-	-	70

PUBLIC AREAS

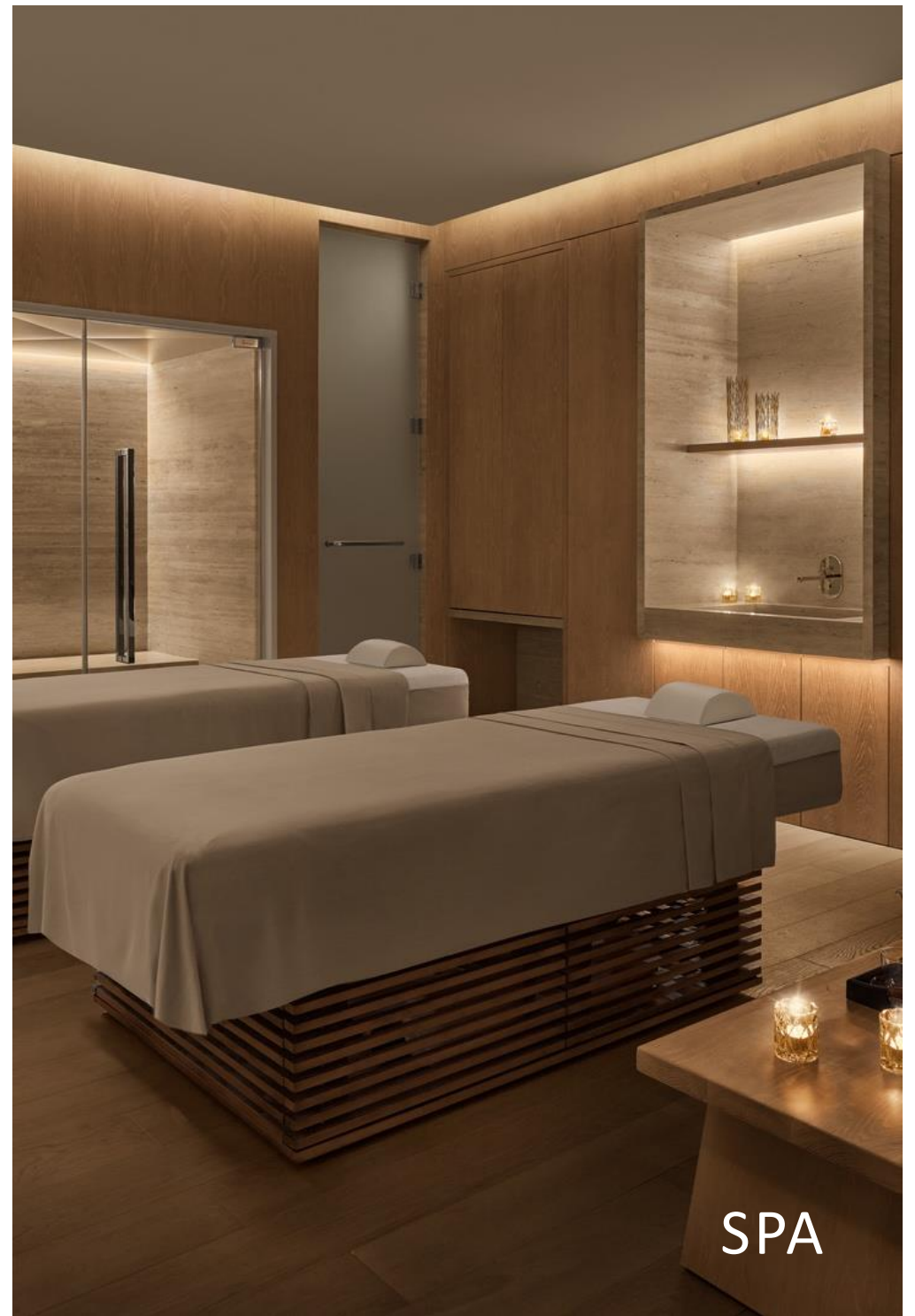




GYM



KIDS PLAYROOM



SPA

THE
DUBAI
EDITION

DUBAI FOUNTAIN STREET, DOWNTOWN DUBAI,

DUBAI, UNITED ARAB EMIRATES, 11788 TOLL

FREE: +971 46023333

FAX: +971 46023334